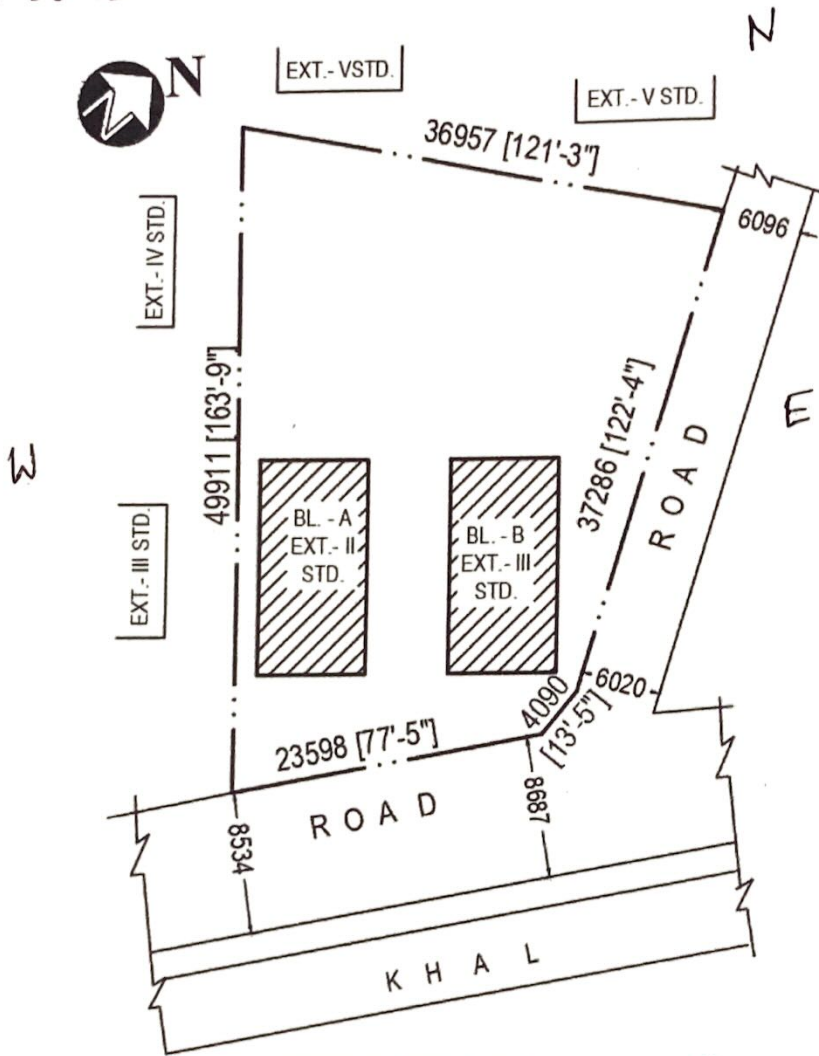


SITE PLAN OF A LAND WITH EXT. II - STD. & III STD. BUILDING IN RESPECT OF HOLDING NO. - 1043, BANGUR AVENUE, WARD NO. - 29, MOUZA - KRISHNAPUR(O), SHYAM NAGAR(N), J. L. NO. - 17(O), 32/20 (N), C. S Khatian NO. - 5, 6, 7, 11, 139, C. S DAG NO. -1321/ 1338,1339, R. S. KHATIAN NO. - 507, 726, 426, R. S. DAG NO. - 472, 473, 474, C. S. PLOT NO. - 1321/ 1338,1321/1339, P. S. - LAKE TOWN, DIST. - 24 PARGANAS(N), UNDERSOUTH DUM DUM MUNICIPALITY.

LATITUDE - 22.6033725
22°36'12.1428"

LONGITUDE 88.4108764
88°24'39.1536"



SITE PLAN

(SCALE - 1" = 48'- 0")

SALASAR SHYAM PROJECTS LLP

Partner

Date:

**West Bengal Real Estate Regulatory Authority
Calcutta Green's Commercial complex, 1st Floor,
1050/2, Survey Park, Kolkata- 700075.**

Sub: Location Details of Project

Sir,

We are enclosing herewith the location details of the project JADE, with clear demarcation of land dedicated for the project along with its boundaries including the latitude and longitude of the end points of the project.

Thanking you

Yours faithfully,

SALASAR SHYAM PROJECTS LLP

Partner

